



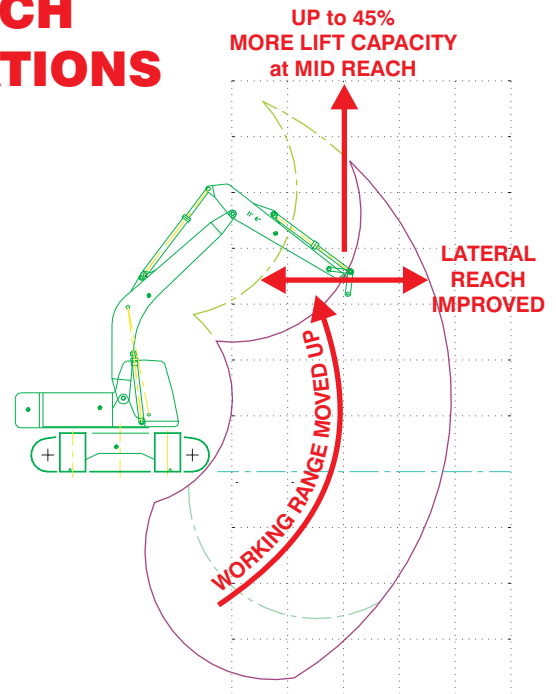
Relocation Brackets

EXCAVATOR BOOM CYLINDERS

A *CLW* Company

www.imac.ca

IMPROVED LIFTING CAPACITY AND LATERAL REACH AT UPPER ELEVATIONS



Boom Cylinder Relocation Brackets - move the tail ends of boom lift cylinders up and out to raise the excavator envelope making it suitable for lifting and loading applications.

- 6 feet **MORE LIFT HEIGHT**
- Up to 45% **MORE LIFT CAPACITY** at mid range
- **DOUBLE LATERAL REACH** at loading heights

Initial Installation:

- Remove pins from tail ends of boom lift cylinders.
- Pin the Relocation Bracket in place using the pins supplied.
- Weld the reaction tabs to the chassis of the machine, insuring that the holes line up with the Relocation Bracket holes.
- Insert the reaction tab pins.
- Attach the boom lift cylinders to the Relocation Brackets.
- Modify hoses to suit.

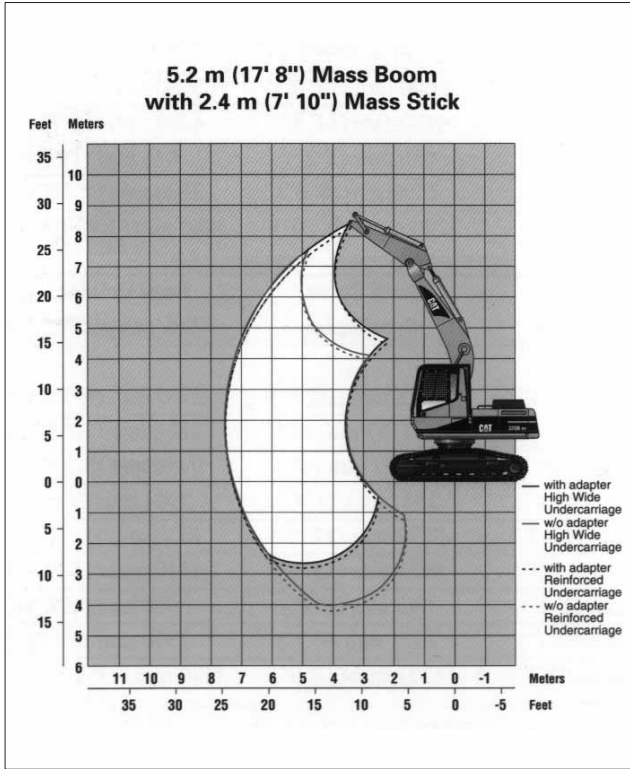
Subsequent removal and installation:

- Requires no cutting or welding.

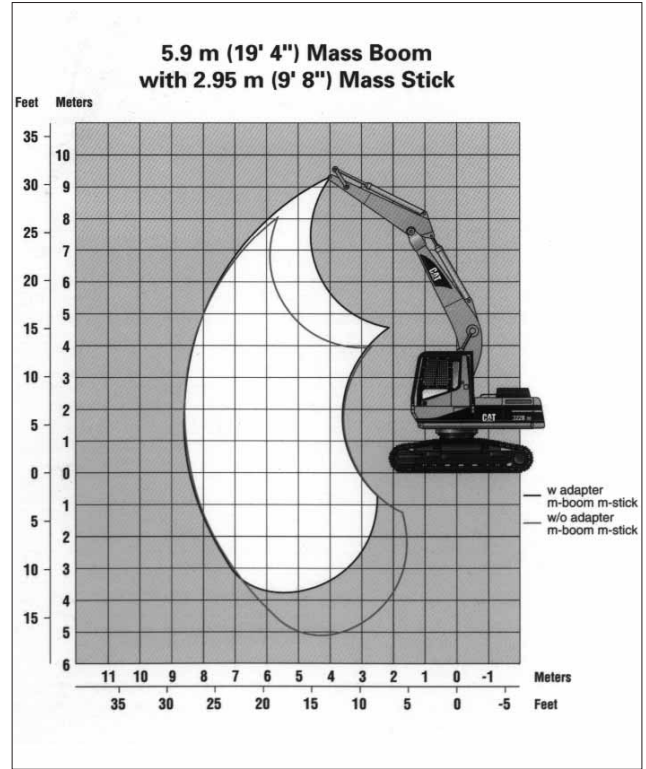
Overlay - **Standard** & **Modified** Envelopes
Working range at bottom is moved to top.



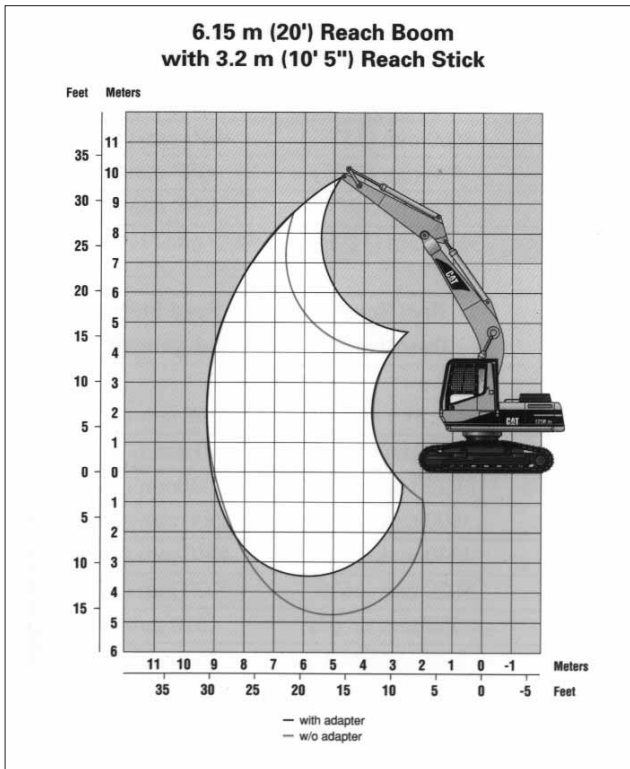
Envelopes on Cat Machines



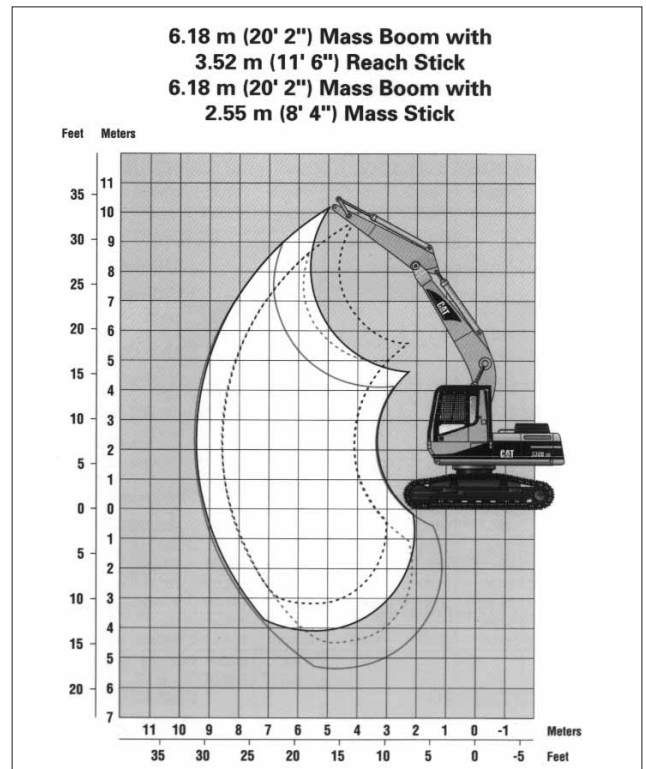
320B



322B



325B



330B